

PITCHING INSTRUCTIONS

1. Test Run

Practice pitching your tent at home to ensure you understand the process.

2. Pick A Site

When finding a site for your tent, try to find an area that is sheltered, flat, and free from sharp objects. If possible, position your tent with the front door facing away from the prevailing wind. Also, try not to pitch your tent under trees as falling branches can damage the tent and falling sap can damage the fabric.

3. Ground Sheet

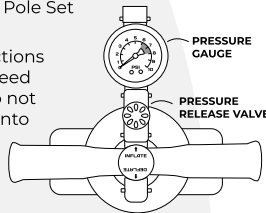
To protect your tent from dirt and damage, it is recommended to use a ZEMPIRE® Ground Sheet. Ground Sheets not only protect your tent floor but also make pack down faster and cleaner. The Ground Sheet should be pegged down in the correct position first, then the tent placed on top. ZEMPIRE® Ground Sheets are slightly smaller than the size of the tent floor to ensure water does not collect between the two layers.

4. Unpacking

When you take your tent out for the first time, take a moment to see how it is packed or take a photo with your phone. This will help you when it comes to packing your tent away. Separate and identify the different parts included with your tent. The package should include the following:

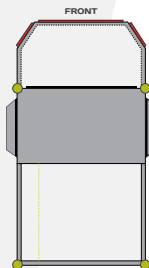
- Tent
- Tent Inner (Pre-attached)
- Pressure release valve
- Pressure gauge
- Pump
- Front Aluminium Brow Pole
- Side Aluminium Brow Poles (x2)
- Guy Ropes (Pre-attached)
- Awning Pole Set
- Pegs

Assemble the aluminium brow poles. The sections are joined together with shock cord, so just need slotting together. Ensure that the sections do not snap together, and each section inserts fully into the adjoining pole.



5. Pump Setup

Your ZEMPIRE® Pro Series Pump included with your tent comes with a pressure gauge and pressure release valve to ensure that the poles are inflated to the correct level. The pump switches between two modes. Double action mode allows you to add high volume at low pressure and is ideal for the first half of inflation. Single action mode offers low volume at high pressure and enables you to get the last few PSI into the tubes easily. The pump accessories should be assembled in the following configuration:



6. Layout

Unroll the tent fly with the floor facing down. The large awning door with 4 PVC windows is located at the front of the tent. Peg out the 4 corners of the sewn-in ground sheet, (●) ensuring there is significant tension between each point and that the floor sits as flat as possible. Peg the front corners of your awning so the awning walls are in-line with the body of the tent. For best results, pegs should be angled away from your tent at 45°.

7. Airflow

To enable air to enter the tent during the pitching process, all door and window covers should be opened. It is important however that the mesh doors remain closed during the pitching process to ensure the tent holds its correct shape during inflation and is not over tightened, causing damage.

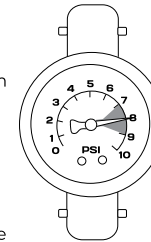
8. Boston Valve Attachment

The external inflation valves are located under the rain socks along the right side of the tent. Before inflating, remove the valve cap (A) and screw the master valve (B) into the threaded section attached to the poles. For deflation, simply unscrew the master valve so air can escape. It is important that the valve is not cross threaded and is firmly tightened. Make sure no fabric is stuck in the valve, as this will cause air to leak.



9. Inflation

Working from the rear of the tent to the front, inflate each tube to 7-9 PSI. The pressure-release valve will "hiss" when 9 PSI is reached. It is important not to over-inflate the tubes. It is recommended that during very hot weather 7 PSI is used to provide room for expansion during the day. In cooler or windier conditions 9 PSI is recommended.



As each pole inflates, it may be necessary to support the center of the pole until they assume their correct shape. It is also a good time to ensure that the base of each pole is sitting correctly on the velcro patches of the tent floor, as poles can sometimes move off the velcro during the pitching process.

10. Setting the Floor

It may be necessary to align the base of each pole so that the floor sits flat and taught. You may also need to realign the corner pegging points so the floor sits flat. At this point it helps if the front door is completely closed when pegging out the front of the tent.

11. Pegging

Peg the remaining peg loops around the tent. Durable steel pegs are included with your tent which will be suitable for the majority of conditions. However, when camping at a rocky or loose sandy location, you may wish to purchase more specialised pegs. A range of specialised ZEMPIRE® Pegs are available.

12. Front Brow Pole

Insert the longest brow pole through the pole sleeve that runs above the front door. Insert each end into the holders sewn onto the pole cover on each side of the door.

13. Side Brow Poles

Insert the remaining shorter brow poles through the pole sleeves located above each side door. Insert each end into the holders found on each side of the door.

14. Anchor Webbing Straps

Anchor webbing straps are located at each end of your tent. These webbing straps are essential for the stability of your tent. They should be firmly pegged out at a 45° angle. In windy conditions or when camping in soggy ground you may need to double peg the Steel "O" rings at the base of each strap. Anchor webbing straps should be used at all times.

15. Vents

To reduce condensation, it is important that the vents are opened at all times. Your tent is designed with a high/low ventilation system that relies on all vents being opened to achieve good air circulation. If you find condensation building up on the inside of your fly, it is recommended that the front 360° door cover is opened to allow maximum airflow. ZEMPIRE® tents have a large number of ventilation options, however, in certain conditions condensation may occur. Condensation and its effects are not covered by warranty.

16. Guy Ropes

Guy ropes are pre-attached on all ZEMPIRE® tents. It is recommended that guy ropes are used at all times. It is important not to over-tighten the guy ropes. They should sit taught but should not distort the shape of the tent.

17. Inner Pods

Although the inner bedrooms are pre-attached, it will be necessary to tension each of the corner webbing straps after the tent is pitched. These should be loosened before taking the tent down, but do not need to be removed.

18. Deflation

- Close all the mesh doors leaving the covers open to allow air to escape from the tent.
- Loosen the inner pod webbing straps.
- Remove the brow poles from the side canopies and front of the tent.
- Unpeg all guy ropes and roll up to ensure they do not get tangled during packing.
- Unpeg the anchor fin webbing straps.
- Unpeg all peg points except the four corners.
- Clean and dry pegs before storing in the bag.
- Unscrew the master valves on each air-pole. Wait for all the air to be expelled.
- Unpeg the four corners of the tent. Clean and pack the pegs.
- Lay the carry bag at one end of the tent. Fold the tent to 2/3s of the length of the bag. The tent should be folded parallel to the air tubes.
- Place the pole, pump, and peg bags on top of the folded tent at the end opposite the valves. Roll the tent from the "non-valve" side to the "valve-side" to help expel any remaining air from the tubes. It may take more than one roll to expel all the air from the tent.
- Use the webbing compression straps to secure the rolled tent and stand on its end.
- Pull the carry bag over the rolled tent. Flip the carry bag over, zip closed and secure the compression straps.

Please turn page for Care Instructions and Warranty.



UV Degradation

Tent fabrics can be weakened by prolonged exposure to sunlight. Under normal holiday use, your ZEMPIRE® tent will give you many years of camping enjoyment. However, extended use in strong sunlight will cause degradation. It is recommended that during periods of strong sunlight a ZEMPIRE® Roof Cover is used to help protect from UV damage. UV degradation is not covered under warranty. The warranty does not cover permanent sites, displays or commercial use.

Weathering your tent

1. When you first receive tent, you will need to weather it. This is a process of soaking the fabric to ensure the cotton threads swell up, filling stitch holes and creating a watertight surface.
2. Soak the fabric with a garden hose until the fabric is visibly damp. Allow to dry and repeat two or three times.
3. Your tent will get more watertight the more you use it. Do not be concerned if you have a small amount of water coming through the seams on the first few times you get heavy rain.
4. Zempire TC tents are made from a combination of natural cotton for breathability and polyester for strength. Note that as cotton is a natural fiber you will notice variances in both colour and thickness of the thread. This is normal and is a characteristic of a natural and breathable fiber.

For a detailed description of all the features and specifications of this product please visit our website.

WWW.ZEMPIRECAMPING.COM

Designed and tested in New Zealand. Made with care in China.

WARRANTY & CARE

4 Year Tent Guarantee

Please take time to read about the protection we offer you.

All our tents come with a guarantee designed to protect you as our valued customer. Flow Imports Ltd., the makers of ZEMPIRE® Camping Equipment tents, will repair or replace this tent, at their discretion, should it fail due to faulty materials or manufacture for a period of 4 years from the date of sale.

The Guarantee is subject to the following conditions:

1. The Guarantee only applies to an original purchaser who purchased this tent from an approved retail outlet.
2. The Guarantee does not apply if the tent has been used for anything other than reasonable personal camping use. Commercial use (e.g. rental) or continuous use as a residence are expressly excluded.
3. Damage due to normal wear and tear, accident, acts of God, negligence (other than by Flow Imports Ltd.), failure by the purchaser to ensure instructions for setting up and care are observed, deterioration due to abnormal exposure to ultraviolet light, insect or mildew attack, or any other cause reasonably beyond the control of Flow Imports Ltd. are not covered.
4. If redress is sought under the terms of this Guarantee, then the tent must be returned by the purchaser to the outlet from where it was purchased within the Guarantee period, in a clean, dry state and with proof of purchase.
5. All transport costs and any other indirect costs are excluded from the Guarantee.
6. Flow Imports Ltd. reserves the right to make a reasonable charge for repairs which it determines are not within the scope of the Guarantee.
7. The Guarantee does not limit, modify or exclude any rights under any law if doing so would contravene that law or make any part of this Guarantee invalid. However, Flow Imports Ltd.:
 - a) excludes (to the extent permitted by applicable law) all conditions and warranties that might otherwise be implied; and
 - b) limits its liability for breach of any such condition or Guarantee that it cannot exclude together with its liability under the Guarantee, to repairing or replacing the goods or paying the cost of having the goods repaired or replaced (at Flow Imports' option).

This tent has been made with meticulous care and attention to detail. Providing it's properly looked after and correctly stored, it will help you enjoy all that nature has to offer for years to come.

Care Instructions

1. Ensure guy ropes are out at all times during use.
2. Never pack your tent away wet. If you must take your tent down when wet, ensure that it is dried completely as soon as possible to prevent mildew forming.
3. If mildew does form on your tent, wash off with warm water and a soft brush to prevent further growth, do not use soap or detergents.
4. Do not use an open flame inside your tent. The fabric has been treated with a fire retardant but is in no way fire-proof.
5. Clean all pegs and poles before storing.
6. This tent is not designed to withstand storm conditions. During strong winds, it is recommended that the tent be taken down.
7. Do not leave your tent pitched unnecessarily for extended periods of time. UV light damages the fly and will shorten the life of your tent.

Condensation

As your TC Pro tent is made from breathable Poly Cotton fabric you are unlikely to experience condensation issues. However, it is recommended that the lower vents are opened at all times to allow air circulation. During humid or damp conditions, it is recommended that the inner-door covers are opened to expose the mesh layer enabling additional airflow throughout the tent. Do not use foam sleeping mattresses directly on the tent floor. This will cause condensation between the mat and the floor and if not dried out, can lead to mildew forming.

Get out more – you owe it to yourself!



Zempire®
CAMPING EQUIPMENT